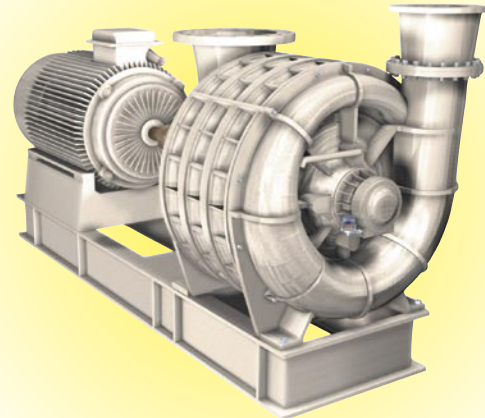


# TECHNICAL DATA SHEET

## TECHNICAL DATA

**Number of stages :** 1 thru 7 (8 for 50Hz)  
**Inlet connection :** 14" (356 mm) flange, ANSI 125# drilling  
**Outlet connection :** 14" (356 mm) flange, ANSI 125# drilling  
**Operating speed :** 3550 rpm in direct drive (60Hz)  
**Lubrication :** Oil type with constant level  
**Impeller diameter :** 26" (662 mm)  
**Impeller tip speed :** 400 fps (122 m / sec)  
**Drive :** Direct drive or gear box or V-belts  
**Vibration tolerance :** 1.25 mils peak-to-peak (4.5 mm /s RMS)  
**Balance piston :** From 5 to 8 stages with pipe connection  
**Shaft end :** 2" 9/16 (65mm) diameter, inlet end drive standard

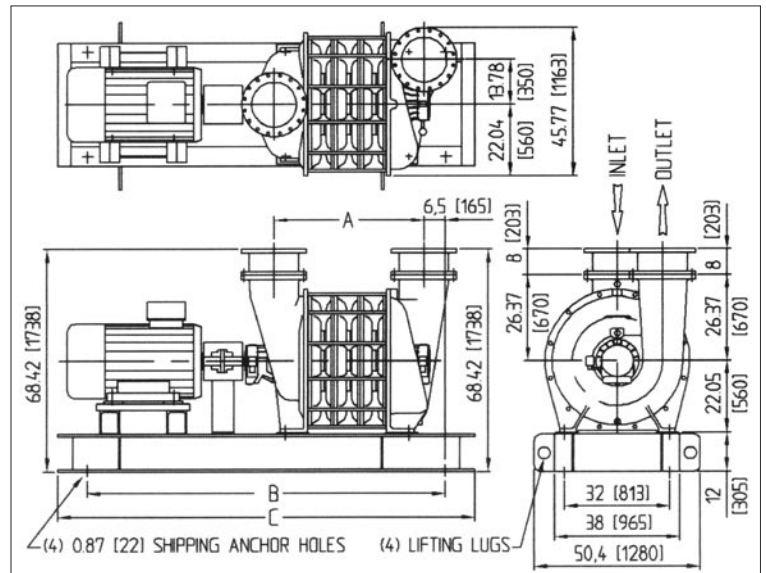
## "251" SERIES



## AIR & GAS

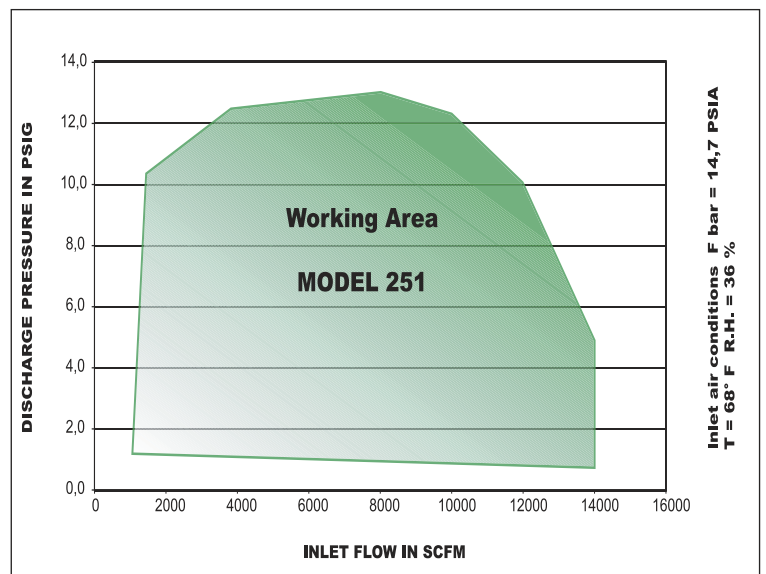
## MATERIALS OF CONSTRUCTION

**Head, Sections, Bearing housings :** Cast iron ASTM A-48 Class 35B  
**Tie rods :** 13/16" (20 mm) diameter cold drawn steel A60  
**Joint sealing compound :** RTV IS502 Silicone  
**Seals (air) :** Graphite ring (standard) or carbon ring each end  
**Seals (gas) :** Four carbon rings each end with inert gas injection  
**Bearings :** Ball bearings 6316 C3 PER AFBMA B10 STANDARD  
**Shaft :** AISI 1038 Carbon steel or equivalent  
**Impellers :** Fabricated aluminium ASTM 6061  
**Baffle rings :** Stainless steel  
**Motor pedestal :** Structural steel.  
**Base pads :** Korfund Elasto-rib or equivalent  
**Noise level :** In compliance with OSHA standards when machine is fully, piped (certified tests available).



BLOWER SIZE	"A"	"B"	"C"	WEIGHT LBS	KG	ROTOR WK <sup>2</sup> (lb. ft <sup>2</sup> ) FABRICATED ONLY
<b>25101</b>	22 (559)	102.0 (2591)	120.0 (3048)	3640	1650	<b>8.86</b>
<b>25102</b>	29.88 (759)	102.0 (2591)	120.0 (3048)	4300	1950	<b>17.52</b>
<b>25103</b>	37.75 (959)	114.0 (2896)	132.0 (3353)	5070	2300	<b>26.18</b>
<b>25104</b>	45.63 (1159)	126.0 (3200)	144.0 (3658)	5840	2650	<b>34.84</b>
<b>25105</b>	53.50 (1359)	144.0 (3658)	162.0 (4115)	6720	3050	<b>43.50</b>
<b>25106</b>	61.38 (1559)	144.0 (3658)	162.0 (4115)	7390	3350	<b>52.16</b>
<b>25107</b>	69.25 (1759)	154.0 (3912)	172.0 (4369)	8270	3750	<b>60.82</b>
<b>25108</b>	77.12 (1959)	154.0 (3912)	172.0 (4369)	8930	4050	<b>69.48</b>

DIMENSIONS ARE IN INCHES AND (MM)  
ACTUAL DIMENSIONS MAY VARY SLIGHTLY TO SUIT APPLICATION



Values, dimensions and reference in this brochure are approximate and intended as a guide only, not for construction and are subject to change without notice.